

SF322T
Dinghy T Terminal Eye

Technical Data
 Forging material : AISI316 - DIN 1.4401
 Surface treatment : "E.P." (Electro polished)
 Fits Backing Plate - 6510-7128

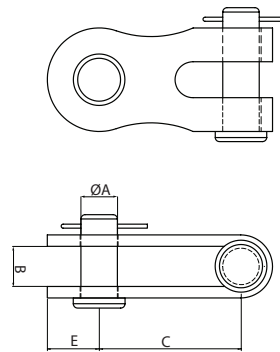


SF322T	SIZE	ØB	ØD	L
Code	(mm)	(mm)	(mm)	(mm)
6322-6467	6	6.4	6	46.7

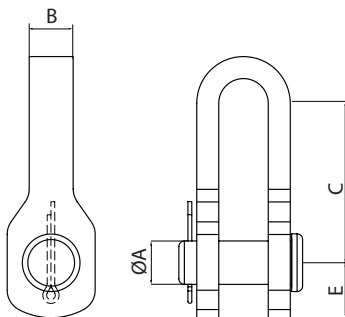


VRG3
Double Jaw Toggle Plate

Technical Data
 Sheet material : AISI316 - DIN 1.4401
 Surface treatment : "E.P." (Electro polished)



VRG3	SIZE Pin (Inch)	ØA	B	C	E	MBL
Code		(mm)	(mm)	(mm)	(mm)	(kfg)
VRG3-0516	5/16"	8	9	35	12	2,400
VRG3-0308	3/8"	9.5	11	40.5	14	3,600
VRG3-0716	7/16"	11	14	49	16	5,000
VRG3-0102	1/2"	12.7	14	49	18	6,800
VRG3-0508	5/8"	15.8	18	61	21	10,900
VRG3-0304	3/4"	19	22	70	24	15,900
VRG3-0708	7/8"	22.2	25	75	29	21,500



VRG4
Eye Jaw Toggle

Technical Data
 Sheet material : AISI316 - DIN 1.4401
 Surface treatment : "E.P." (Electro polished)

VRG4	SIZE Pin (Inch)	ØA	B	C	E	MBL
Code		(mm)	(mm)	(mm)	(mm)	(kfg)
VRG4-0716	7/16"	11	13	51	15	5,000
VRG4-0102	1/2"	12.7	15	53	19	6,800
VRG4-0508	5/8"	15.8	16	58	20	10,900
VRG4-0304	3/4"	19	19	76.5	25	15,900
VRG4-0708	7/8"	22.2	22	85	30	21,500
VRG4-1000	1"	25.4	25	96.5	30	28,300