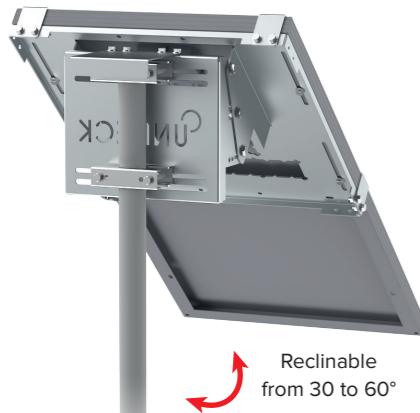




**UNIFIX 20S**  
For Unisun 10.12M/ 10.24M/ 20.12M/ 20.24M  
Landscape orientation  
Masthead or middle of the mast  
Mounting flanges in option  
Ref 0286



**UNIFIX 50S**  
For Unisun 30.12M/ 50.12M/ 50.24M/ 55.12BC  
Landscape orientation  
Masthead or middle of the mast  
Mounting flanges in option  
Ref 0293



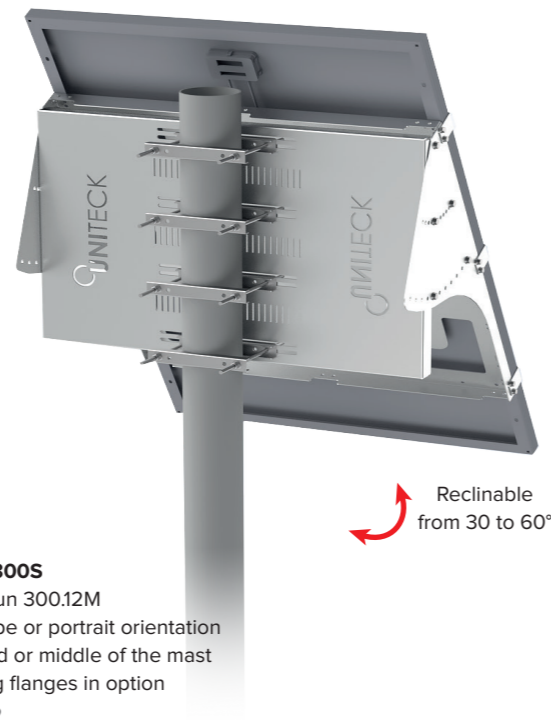
**UNIFIX 100S**  
For Unisun 80.12M/ 100.12M/ 100.24M/ 120.12BC  
Landscape or portrait orientation  
Masthead or middle of the mast  
Mounting flanges in option  
Ref 0323



**UNIFIX 150S**  
For Unisun 150.12M/ 150.24M/ 165.12BC/ 200.12BC  
Landscape or portrait orientation  
Masthead or middle of the mast  
Mounting flanges in option  
Ref 0866



**UNIFIX 200S**  
For Unisun 200.24M  
Landscape or portrait orientation  
Masthead or middle of the mast  
Mounting flanges in option  
Ref 0941



**UNIFIX 300S**  
For Unisun 300.12M  
Landscape or portrait orientation  
Masthead or middle of the mast  
Mounting flanges in option  
Ref 2082



Mounting Brackets - Reclinable UNIFIX S

# POLE & MAST

## RECLINABLE BRACKETS FOR UNIVERSAL PANELS

Thanks to their universal fastening system, UNIFIX S mounting bracket adapts to all signal masts. Simply, slide your flanges with the M8 or M10 screws onto the rear rail and then tighten.

UNIFIX S offers the possibility to choose the inclination. The tilting system enables you to optimize the electrical production according to the area and the period of use.

With its Easy Install system and their light aluminium structure, its mounting can easily be done alone, without extra assistance.



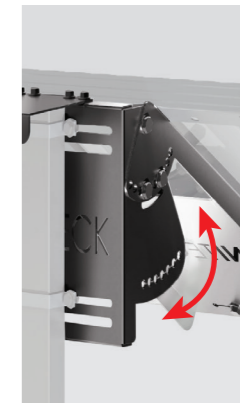
**OPTION**  
UNIFIX S or SF POST FLANGES  
STAINLESS STEEL FASTENERS (x2)

- Diam 40-60 mm  
Ref 2631
- Diam 60-90 mm  
Ref 2648
- Diam 90-130 mm  
Ref 2655
- Diam 130-190 mm  
Ref 2662
- Diam 190-250 mm  
Ref 4185

**UNITECK**

- Adaptable on all signal masts
- Corrosion resistant aluminium + A4 stainless steel screws
- Easy to install
- Reclinable from 30 to 60°
- Can be fixed on any support
- With flanges or U clamps (flanges and M8 or M10 screws in option)

Designed, made in France



**Light, innovative**  
Tilting multi-position system to optimize your electrical performances



**Easy installation system**  
Its upper cap relieves the weight of the installation so that their mounting can easily be done alone, without extra assistance. This cap can be removed afterwards for a fixation on the middle of the pole with a maximum of 130mm diameter. For UNIFIX 100S /150S /200S.