

Mast Base Connection

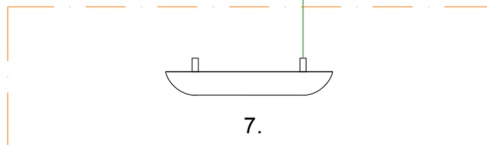
KEY

- 1. SERTEC MARINE CMCE DEVICE
- 2. CUSTOM CMCE DEVICE MOUNT
- 3. BUSBAR
- 4. BACKSTAY CHAINPLATE *
- 5. PORT CHAINPLATE *
- 6. STBD CHAINPLATE *
- 7. PORT GROUND PLATE
- 8. STBD GROUND PLATE
- 9. WATERTIGHT CABLE GLAND
- 10. WATERTIGHT CABLE GLAND
- 11. MAST BASEPLATE

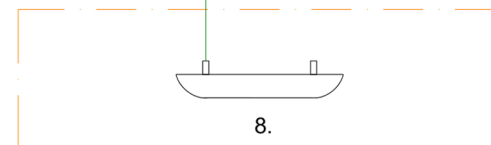
TMS recommend a 25mm dia tinned cable for all connections.

***The chainplates 4; 5; 6 can also go to the nearest ground plate (7;8).**

Port



Stb



Dyno Plate must not be mounted directly opposite each other
They must be mounted one FWD and one AFT of each other