



REMOTE MONITORING SYSTEM



sertec S.R.L.
Soluciones inteligentes pensando en usted



**An award-winning team Experts in Lightning protection
Founded 25 years ago based in Paraguay South America**



STORM 7 remote monitoring system



Storm 7

It is a device that works together with the CMCE, capable of monitoring the electric field in real time in the protection area, with this information it is possible to control the performance of the CMCE and verify the atmospheric activity. The Storm 7 is designed to be used in any location, be it houses, buildings, mountains, ships, industrial plants, among others. Apart from monitoring the electric field, it also has the functionality to measure Temperature, Atmospheric Pressure, Relative Humidity accurately in addition to measuring Altitude.



Storm 7 Performance



Performance

The Storm 7 system integrates four basic components: sensors/devices, connectivity, data processing, and a user interface. The sensors collect data from the environment where the CMCE is installed. Connectivity allows data to be sent to the cloud system, this can be via Ethernet, WiFi or external mobile connectivity. Once these data are received, they are processed, validated and stored in a database. The user can view the data in the form of graphs and make queries about the historical data of interest through the web interface.

The equipment can be powered with **110/240 VAC** - **12/24VDC**, in addition to having the option of powering with solar panels (optional) this can be provided by the company or purchased directly by the customer.



Notifications and Information



Notifications

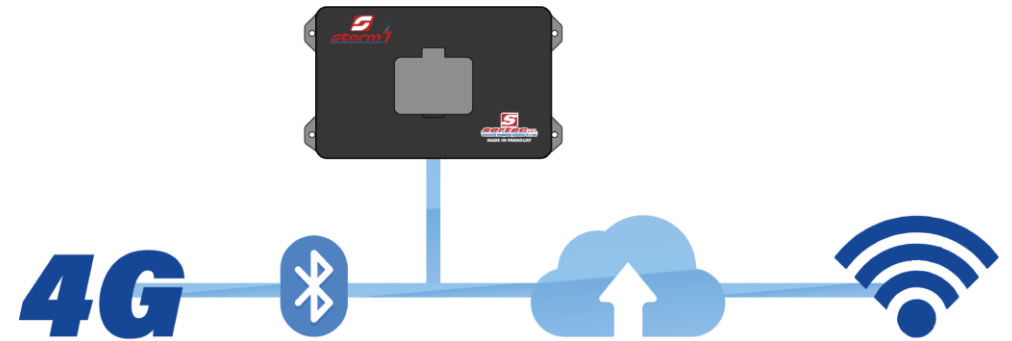
There will be relevant notifications regarding the state of the weather, the operation of the device, disconnection alerts or low drainage of the CMCE to carry out revisions in the installation.

- Drain record
- Recording of Temperature, Pressure, Humidity and Altitude

Information

Real-time monitoring of the measurements at the point of installation of the CMCE-SERTEC. The information is delivered in the Sertec datalogger.

Storm7.com





Storm7 - CMCE Monitoring System

Users:

oas

Password:

→ Login

Sertec S.R.L. - CMCE Monitoring System
Storm7 - Version 1.0

English (EN)

Dattalogger

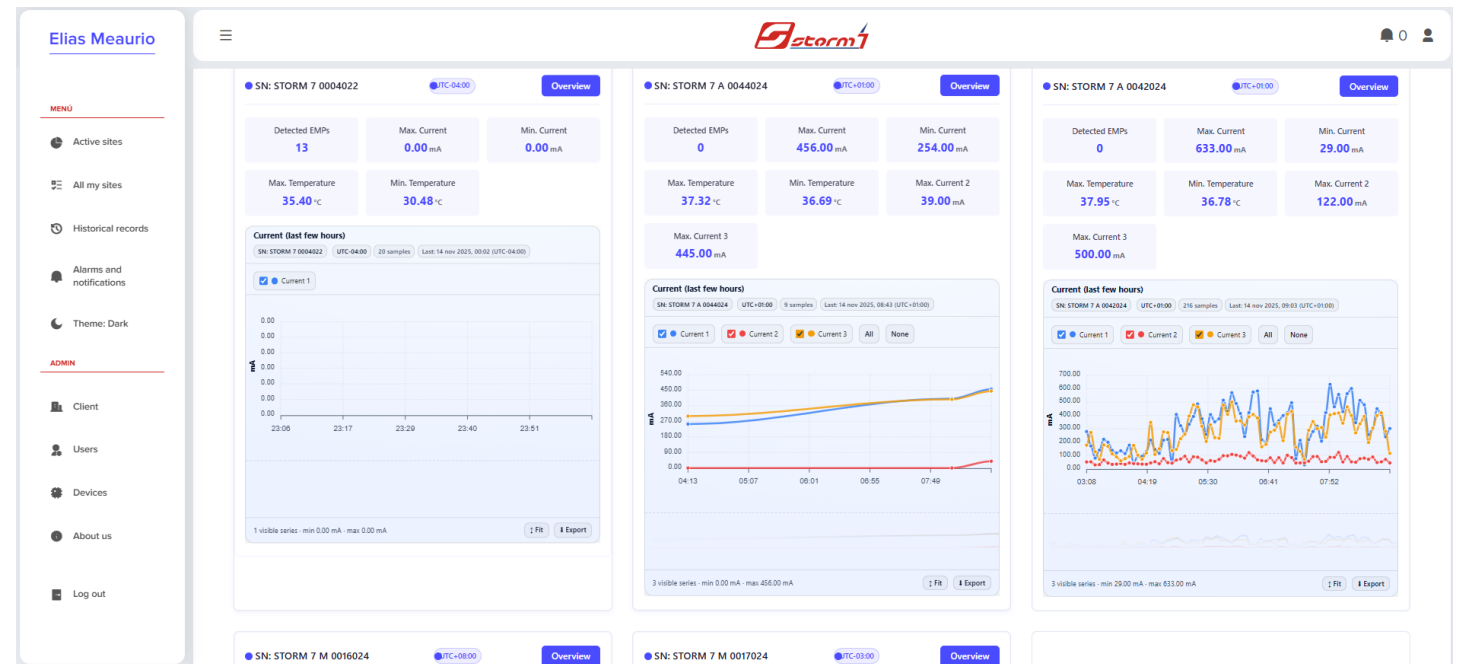


LOGIN

Storm 7 has a friendly interface for the user, where you can access remotely to monitor the drainage and correct operation of the CMCE, you can access from the following link:

<https://storm7.app/>

For the login they will receive a password and a defined user, with these data they will be able to access the web platform.



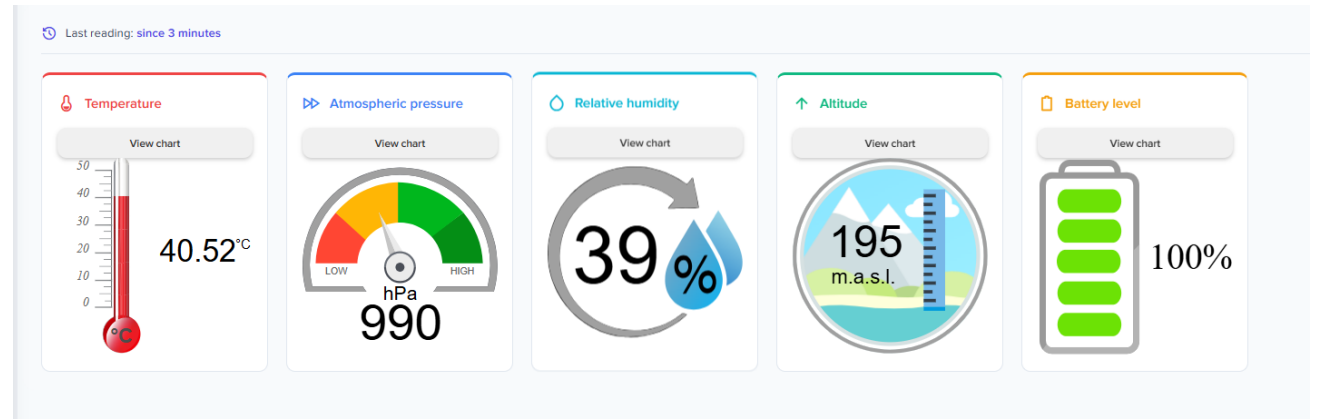
DRAIN MEASUREMENT

In the general view you can see in detail the operation or drainage of the installed CMCE, where all the data provided by Storm 7 will be shown. These data can be seen in the time ranges shown in the tabs above, which are: 6:00 a.m., 12:00 p.m. and 24 hours.



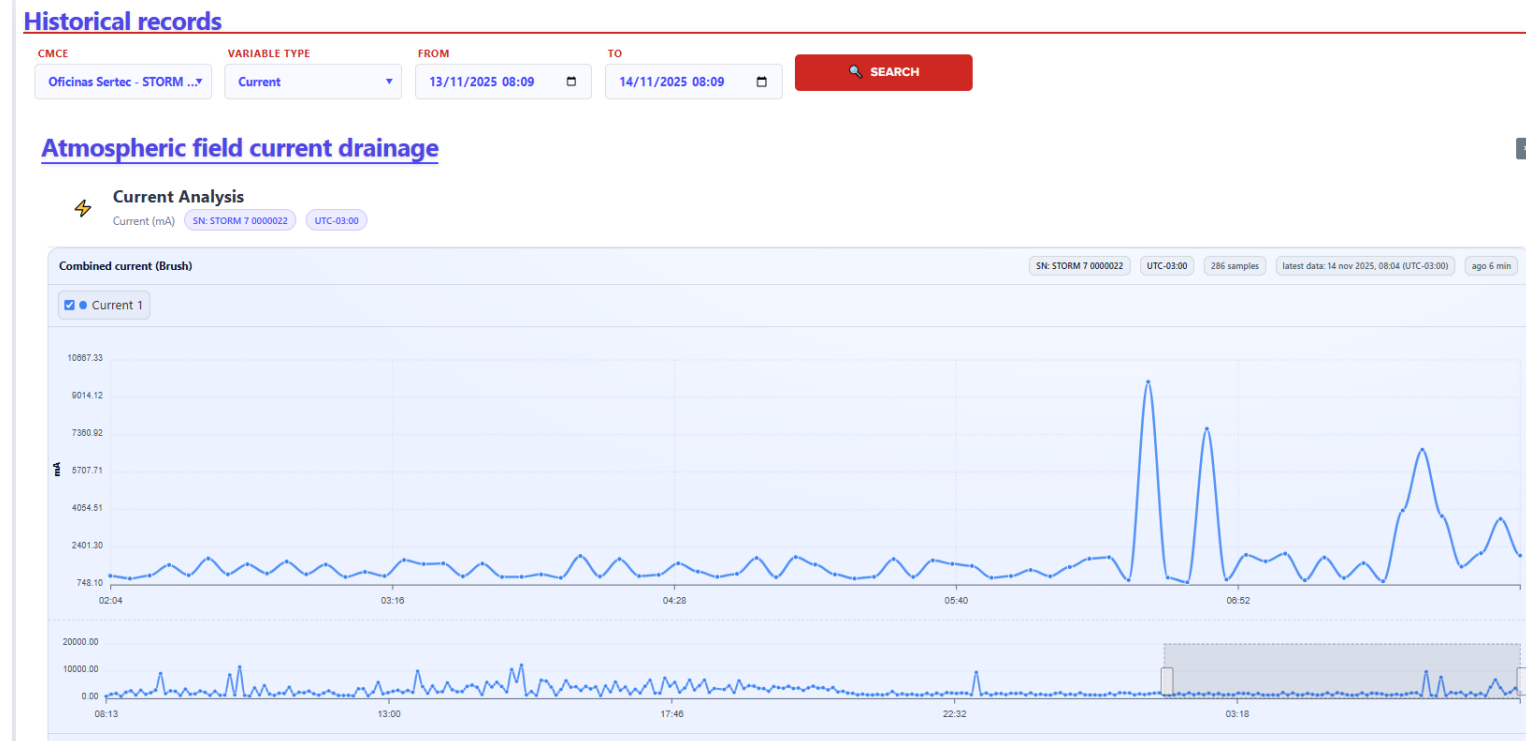
METEOROLOGICAL DATA

The meteorological data recorded by Storm 7 are temperature, atmospheric pressure, relative humidity and altitude. These displayed data are recorded by the Storm 7 and show a previous record of each census data.



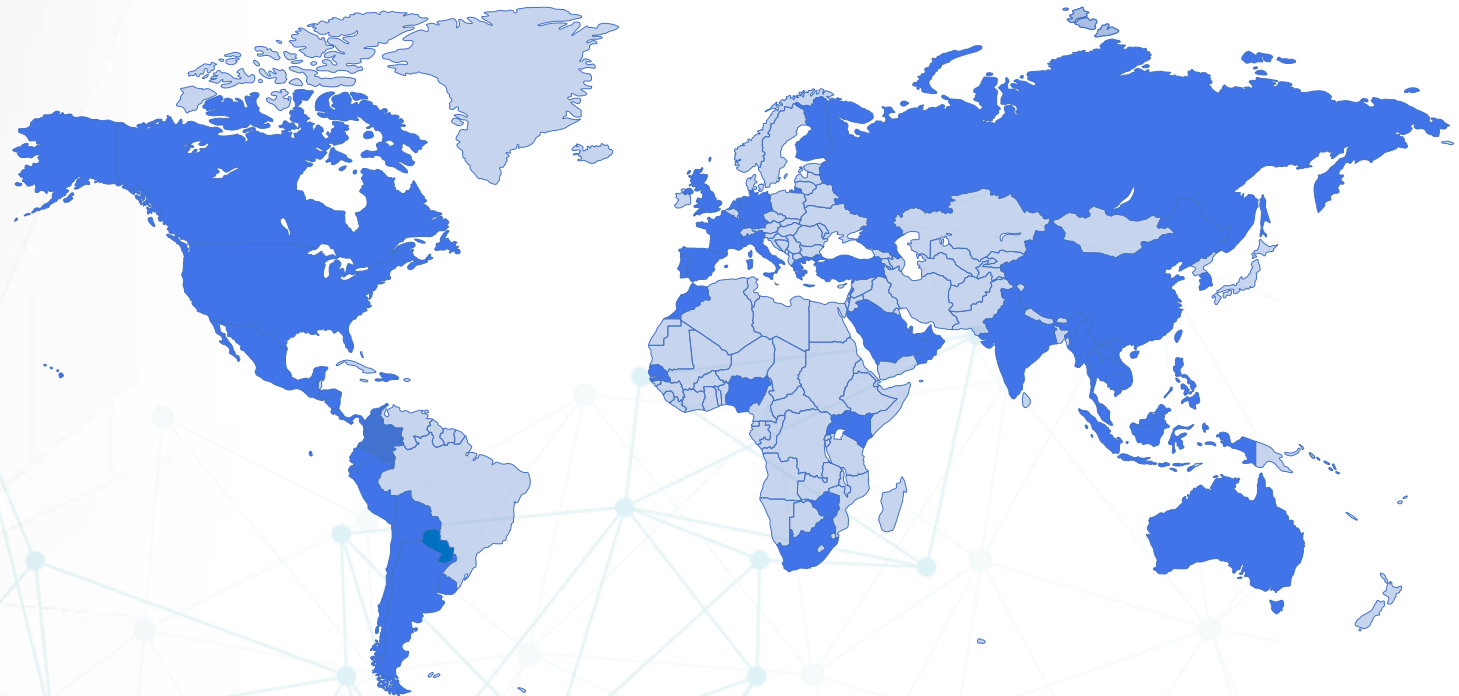
HISTORICAL RECORD

All the data taken by the Storm 7 is saved in the cloud from the date of installation, this data can be used by the user to verify the operation or the environment where the device is installed.



SERTEC Worldwide Presence

- Presence in more than 70 countries
- MORE THAN 1000 CONCRETE PROJECTS
- Certifications Applied to the Product
- Certifications Applied to Processes



Thank you
so much!

