

**Push-to-Reset** allows for easy identification of a tripped breaker as well as an easy reset of the breaker to the on position.

**Multiple Connection Styles** support spade terminal connections or screw/ring terminal connection allowing flexibility of installation.

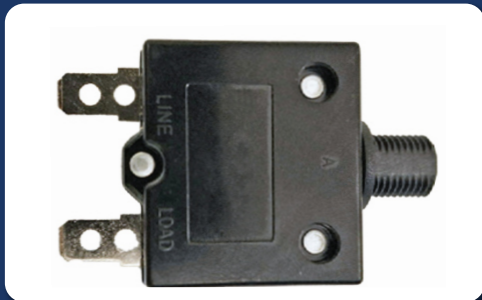
**Includes Knurled Nut & Palnut** for easy and clean panel mount.

**Compact Footprint** allows for installation in areas where space is limited.

**Ignition Protected** safe for installation in closed compartments with potential explosive gases.

**Harsh Environment** design with stainless steel hardware, self locking screws, and optional sealing boot.

## 4710/4711 Series Push-to-Reset Circuit Breakers



## Black and Clear Sealing Boots



PN 4714 - Clear Push Button Boot



PN 4715 - Clear Push Button Boot



**Protects Electrical Circuits** from short circuit events and over-current loads, preventing wire insulation overheating and subsequent destruction.



**Visual Indication of Circuit Opened** with push button protrusion, also used for resetting to on.

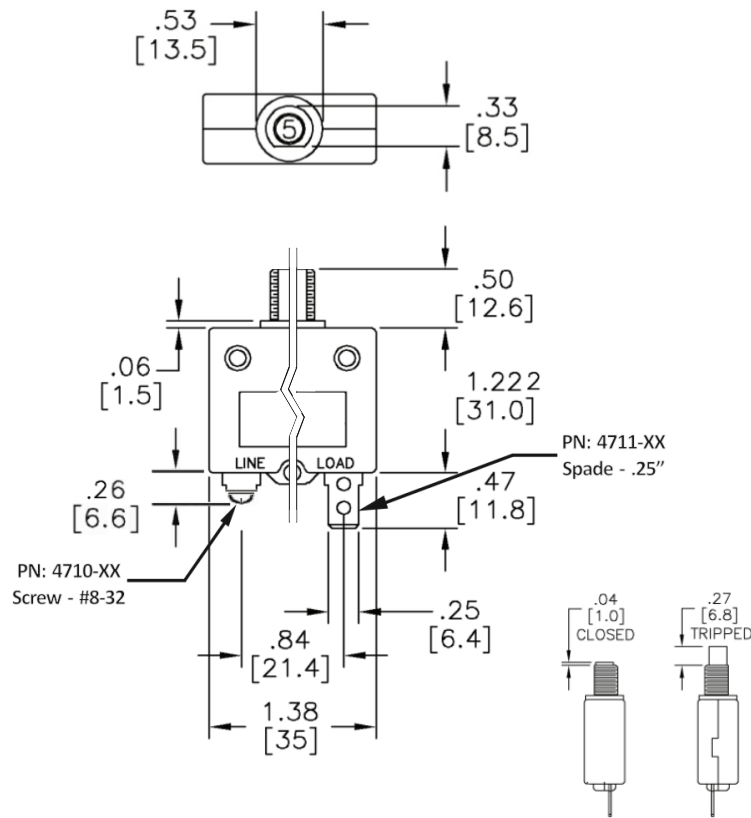


**Bullet-proof Construction:** High-temp materials for engine compartment applications, and stainless self-locking hardware.



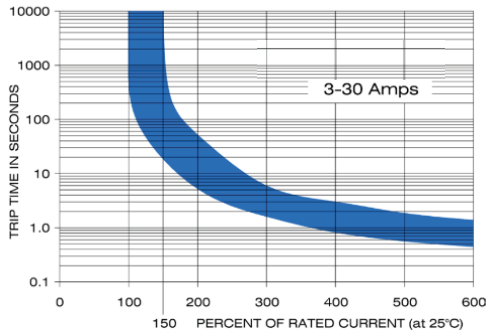
**4 Year Industry Leading Warranty**

## Product Dimensions

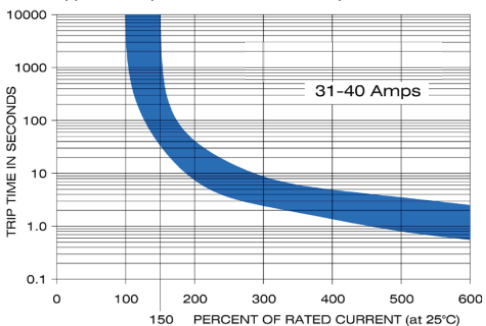


## Trip Curves and Ambient Temp Correction Charts

Typical Trip Curve - 3-30 Amp Breakers



Typical Trip Curve - 30-40 Amp Breakers



Ambient Temperature Correction Factor

Amp Rating	°F	14	32	50	77	95	104	122	140
	°C	-10	0	10	25	35	40	50	60
3 - 40A		0.77	0.83	0.91	1.00	1.06	1.18	1.37	1.47

## Electrical Specifications

Max Operational Voltage	50 Vdc
Minimum Ultimate Trip	Hold at 100% at 25C (77F)
Maximum Ultimate Trip	150% Within 1 Hour 25C (77F)
UL Tripping Current	TC2
Interrupt Capacity (AIC)	0.3kA / 50Vdc, C1 (UL1077)
Ignition Protection	UL1500
Ingress Protection - Terminal Area	IP00
Ingress Protection - Operation Area	IP40

## Specifications

Max Operating Temperature	60C (140 F)
Min Operating Temperature	-10C (14 F)
Mounting Bushing	3/8"-27 Nylon Bushing
Included Panel Mount Hardware	Knurled Nut and Palnut
Terminal Type - 4710-XX	#8-32 Stainless Steel Screw
Terminal Type - 4711-XX	0.25" Spade Terminal - Male

## Part Numbers

	Resell Pack	Bulk Pack
Push Button Breaker - Screw Terminal, 3A	4710-03	4710-03B
Push Button Breaker - Screw Terminal, 5A	4710-05	4710-05B
Push Button Breaker - Screw Terminal, 7A	4710-07	4710-07B
Push Button Breaker - Screw Terminal, 10A	4710-10	4710-10B
Push Button Breaker - Screw Terminal, 15A	4710-15	4710-15B
Push Button Breaker - Screw Terminal, 20A	4710-20	4710-20B
Push Button Breaker - Screw Terminal, 25A	4710-25	4710-25B
Push Button Breaker - Screw Terminal, 30A	4710-30	4710-30B
Push Button Breaker - Screw Terminal, 40A	4710-40	4710-40B
Push Button Breaker - Spade Terminal, 3A	4711-03	4711-03B
Push Button Breaker - Spade Terminal, 5A	4711-05	4711-05B
Push Button Breaker - Spade Terminal, 7A	4711-07	4711-07B
Push Button Breaker - Spade Terminal, 10A	4711-10	4711-10B
Push Button Breaker - Spade Terminal, 15A	4711-15	4711-15B
Push Button Breaker - Spade Terminal, 20A	4711-20	4711-20B
Push Button Breaker - Spade Terminal, 25A	4711-25	4711-25B
Push Button Breaker - Spade Terminal, 30A	4711-30	4711-30B
Push Button Breaker - Spade Terminal, 40A	4711-40	4711-40B
Boot - Push Button Breaker - Black	4714	4714B
Boot - Push Button Breaker - Black	4715	4715B

**\* DISCONNECT BATTERY FROM POWER DISTRIBUTION SYSTEM BEFORE INSTALLING PRODUCT TO PREVENT ELECTRICAL SHOCK OR PRODUCT DAMAGE**



Rev 1.1

www.egismobile.com  
360.768.1211  
Bellingham, WA U.S.A

