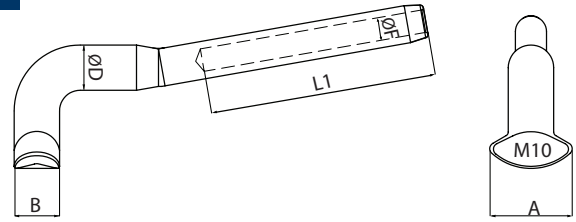




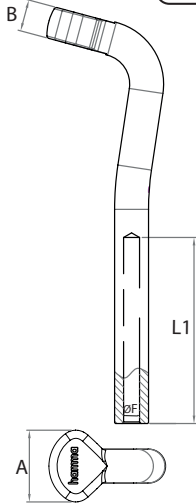
## SF8282S

### T- Terminal

**Technical Data**  
 Body material : Casting AISI316, EN 1.4401  
 Surface treatment : "M.P." (Mirror Polished)  
**Field of application**  
 Not guaranteed for greater than 40% of break load of 1X19 wire. *Use for coastal sailing only*



SF8282S	SIZE	A	B	ØD	ØF	L1
Code	(Cable)	(mm)	(mm)	(mm)	(mm)	(mm)
2828-2V02	2.0	15	6.35	5.5	2.3	33
2828-2V25	2.5	15	6.35	5.5	2.8	33
2828-2V03	3.0	15	6.35	6.3	3.5	33
2828-2V35	3.5	15	6.35	6.3	3.8	38
2828-2V04	4	20	9.12	7.5	4.5	44
2828-2V05	5	20	11	9.1	5.5	55
2828-2V06	6	28	14.3	12.5	6.5	66
2828-2V07	7	28	14.3	14.3	7.5	77
2828-2V08	8	33	18	16.1	8.5	88
2828-2V10	10	33	18	17.8	10.6	110



## SF8282S

### T- Terminal - XS

**Technical Data**  
 Body material : Casting AISI316, EN 1.4401  
 Surface treatment : "M.P." (Mirror Polished)  
**Field of application**  
 Xtra long shack for use with thick wall carbon or composite dinghy and skiff masts



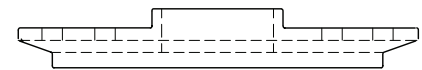
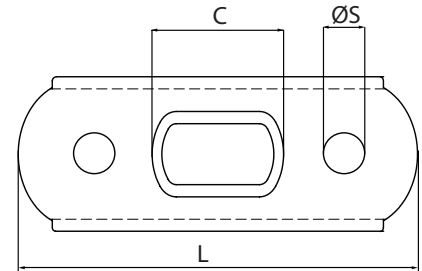
SF8282S	SIZE	A	B	ØD	ØF	L1
Code	(Cable)	(mm)	(mm)	(mm)	(mm)	(mm)
6008-282T0-2001	2.0	13.5	6.0	6.3	2.3	35
6008-282T0-2501	2.5	13.5	6.0	6.3	2.8	35
6008-282T0-3001	3.0	13.5	6.0	6.3	3.5	35
6008-282T0-3501	3.5	13.5	6.0	6.3	3.8	35



## SF510GRSP

### T-terminal Plate

**Technical Data**  
 Casting material : AISI316 - DIN 1.4408  
 Forging material : AISI316 - DIN 1.4401  
 Production : SF8282S - Terminal Plate - Forged  
 Surface treatment : "M.P." (Machine polished)



SF510GRSP	SIZE	C	L	ØS	Terminal
Code	(mm)	(mm)	(mm)	(mm)	
6510-7128	7MM*12.8MM	12.8	51	5	2.0-3.5mm
6510-1323	13MM*23MM	23	68	6.5	4.0mm
6510-9526	9.5MM*26MM	26	88	5.2	5mm
6510-1534	15MM*34.5MM	34.5	123	6.3	6-8mm
6510-1936	19MM*36MM	36	140	6.6	10mm