



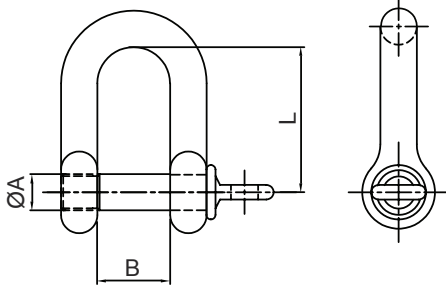
S360CP

D-Shackle

(collared pin)

Technical Data

Casting material : AISI316 - DIN 1.4408
 Forging material : AISI316 - DIN 1.4401
 Production : S360CP - Shackle - Cast
 Pin - Forged
 Surface treatment : "E.P." (Electro polished)



S360CP Code	SIZE (mm)	ØA (mm)	B (mm)	L (mm)	Pin process	B.L. (kgf)
6360-0423	3	3	8	12	Forged	400
6360-0424	4	4	8	16	Forged	550
6360-4405	5	5	10	20	Forged	1,000
6360-2006	6	6	12	24	Forged	1,700
6360-5208	8	8	16	32	Forged	2,800
6360-0410	10	10	20	40	Forged	4,500
6360-0412	12	12	24	48	Forged	6,000
6360-0414	14	14	28	56	Cast	7,000
6360-0416	16	16	32	64	Forged	10,000

SHACKLES



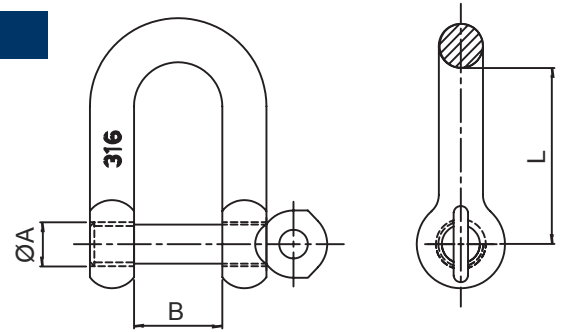
S360LK

D-Shackle

(locking pin)

Technical Data

Casting material : AISI316 - DIN 1.4408
 Forging material : AISI304 - DIN 1.4301/
 AISI316 - DIN 1.4401
 Production : S360CP - Shackle - Cast
 Pin - Forged
 Surface treatment : "E.P." (Electro polished)



S360LK Code	SIZE (mm)	ØA (mm)	B (mm)	L (mm)	B.L. (kgf)
6360-5004	4	4.40	8	16	800
6360-5005	5	4.40	10	20	1,000
6360-5006	6	5.25	12	24	1,400
6360-5008	8	7.10	16	32	2,800
6360-5010	10	8.90	20	40	4,000
6360-5012	12	10.70	24	48	6,200