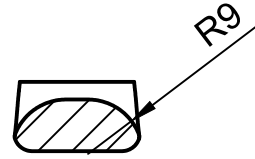
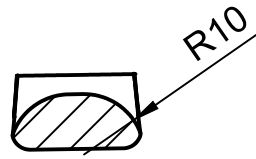


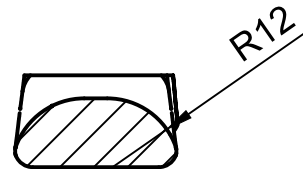
A-A (4:5)



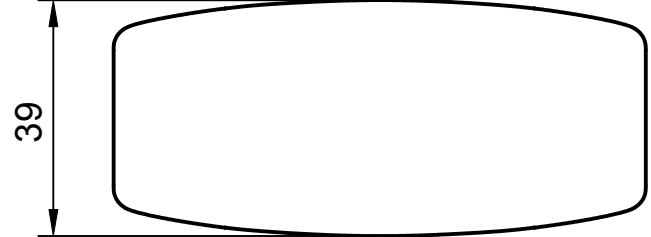
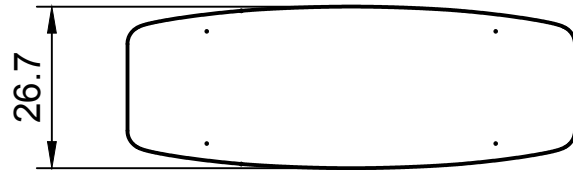
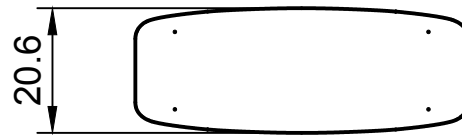
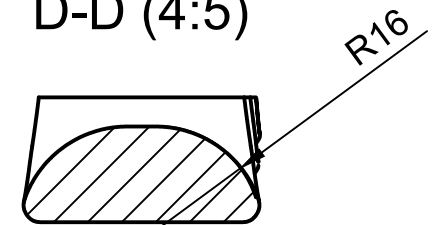
B-B (4:5)




C-C (4:5)



D-D (4:5)



	smartlink 2T	smartlink 5T	smartlink 10T	smartlink 20T
Max Working Load	2T	5T	10T	20T
Strop Diameter	9mm	10.7mm	12.4mm	15mm
Mass	160g	210g	360g	798g

 <p>Cyclops Marine A2 G005 Cody Technology Park Old Ively Road Farnborough GU14 0LX</p>	Project Cyclops smartlink		Drawn Will Birch Tomlinson Date 17/08/2020
	Title smartlink Range		Approved Sam Cray Date 19/08/2020
Scale 4:5	Format A3	Sheet 1/1	Material Dimensions: mm, degrees Tolerance unless stated: 0.1mm, 0.1°
3RD ANGLE	Finish		© Cyclops Marine Limited. All rights reserved. Reproduction, use and dissemination of this drawing may only be undertaken with the prior consent of Cyclops Marine Limited. Do not scale.